

BLUETOOTH MODULE

Configuration

INDEX

1. INTRODUCTORY NOTES.....	3
2. SEARCH AND CONFIGURATION OF THE MODULE	3
3. COMMUNICATION.....	7

1. INTRODUCTORY NOTES

With this module it's possible to communicate and receive data from the weighing system, which usually happens through the serial port, on a computer (or PDA) receiver and readdress the communication on a Virtual Serial Port.

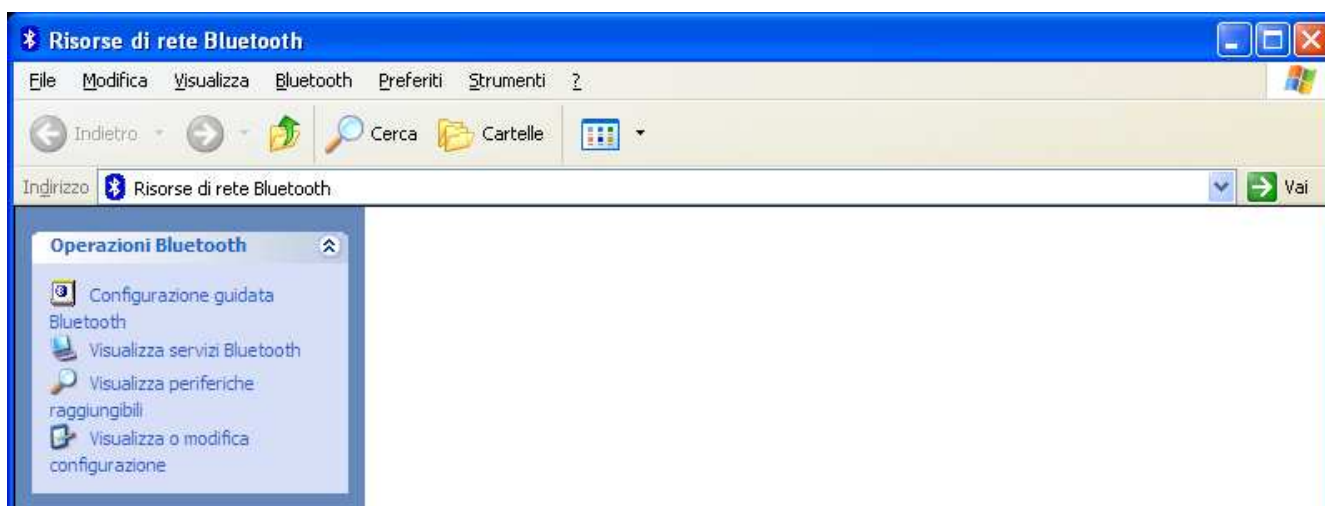
Prerequisites of a PC (or PDA) receiver:

- Bluetooth integrated module (or Bluetooth USB external module) and correctly installed drivers.

2. SEARCH AND CONFIGURATION OF THE MODULE

In order to search a BLTH module one needs to:

- Open **My Bluetooth** (start → all programs → My Bluetooth).
- The following window will appear:



- Click on **“Bluetooth Configuration Wizard”**
- The following window will appear:

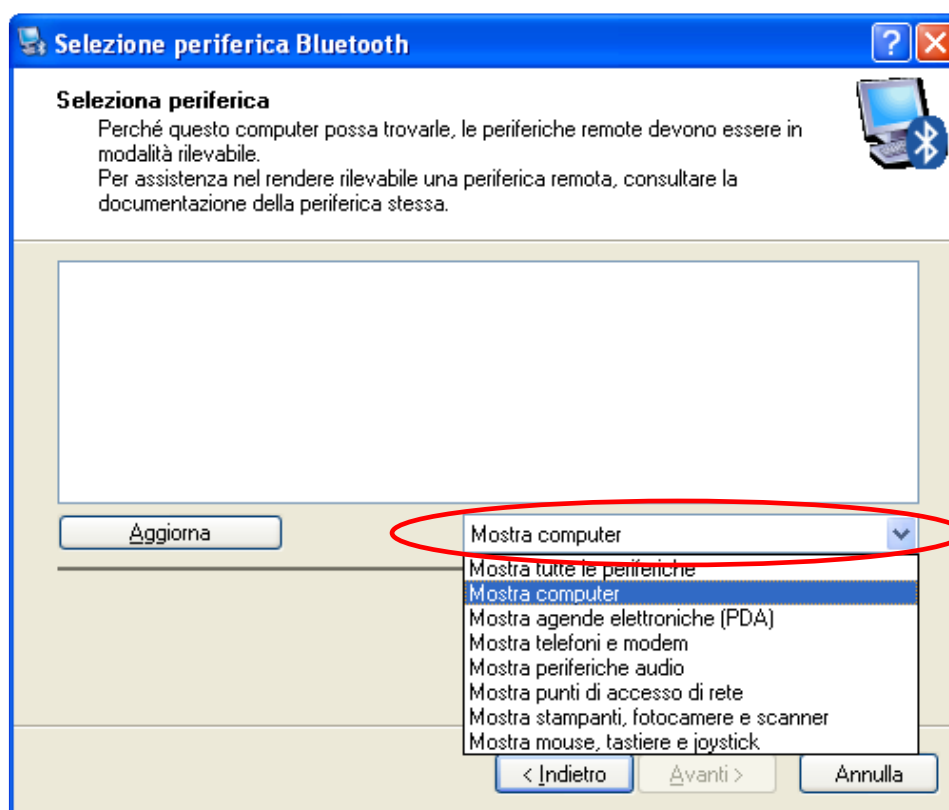


- Select first item (**Finding a Bluetooth device that provided with address of the service requested by the user**) and press **Avanti >** button.

- The following window will appear:



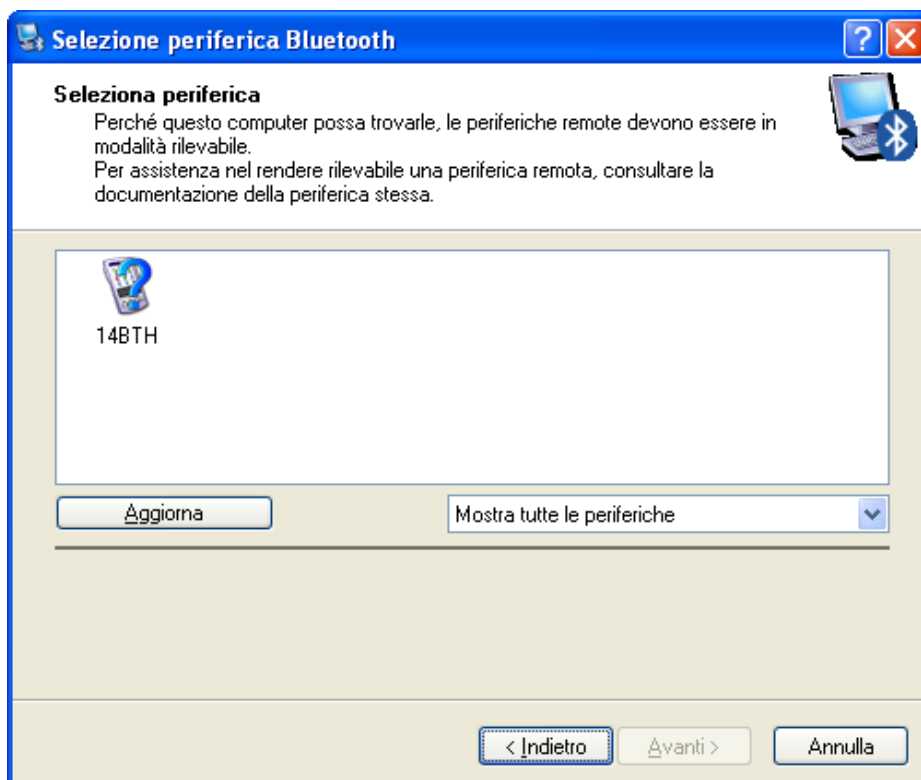
- Select type of service that one needs to configure (**Bluetooth serial port**) and press the  button.
- The following window will appear:



- Select **Show all devices** item from pulldown menu and click on **Updates** button.

With this procedure, all Bluetooth modules will be found.

- If the module is found, it will be displayed with the **14BTH** code:



- Select the module from the list and press the **Avanti >** button.

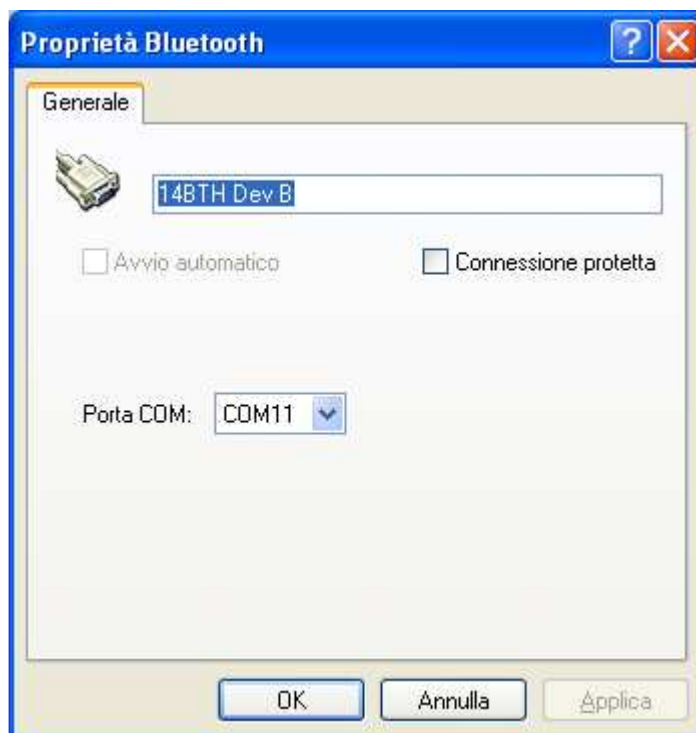
In the event that the device is not detected by the PC, check that:

- 1) The Bluetooth module is properly connected to the indicator
- 2) The indicator is turned ON
- 3) The distance between the indicator and the module is less than 2m

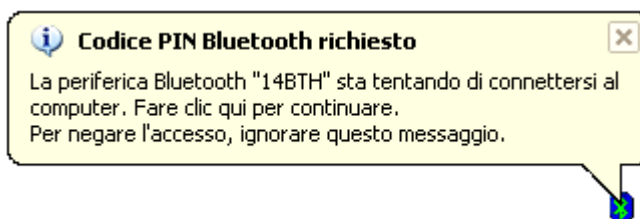
- Type the module description and press on the **Configura** button.



- Select the COM port where one wants to create a **Virtual Serial Port** and confirm.



- Then one will be asked to enter the PIN code of the module:



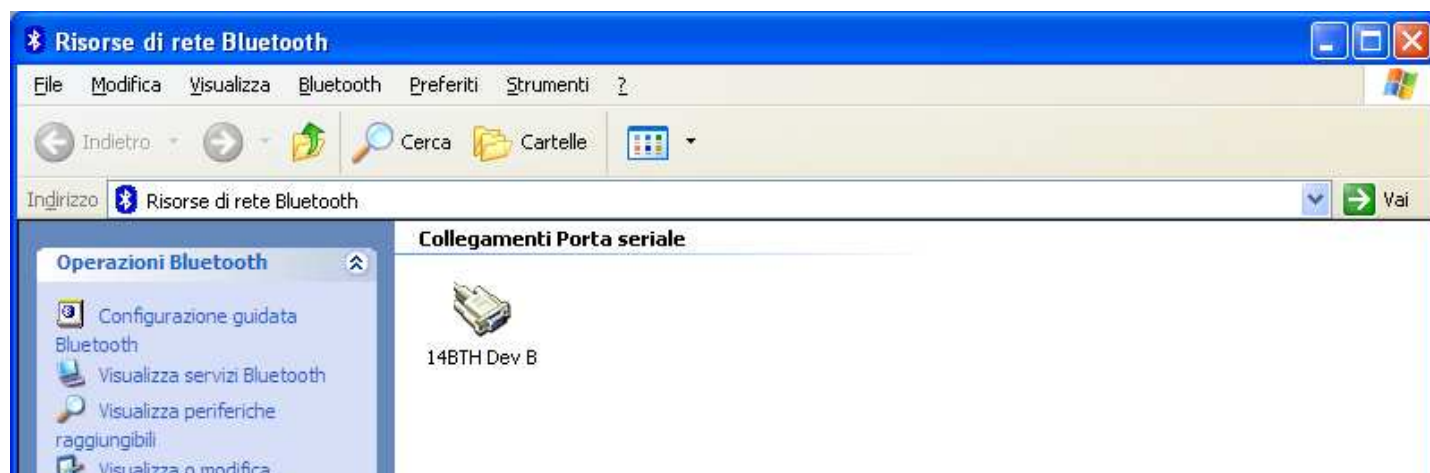
- Type the PIN code of the Bluetooth module (**0000**) and confirm.



3. COMMUNICATION

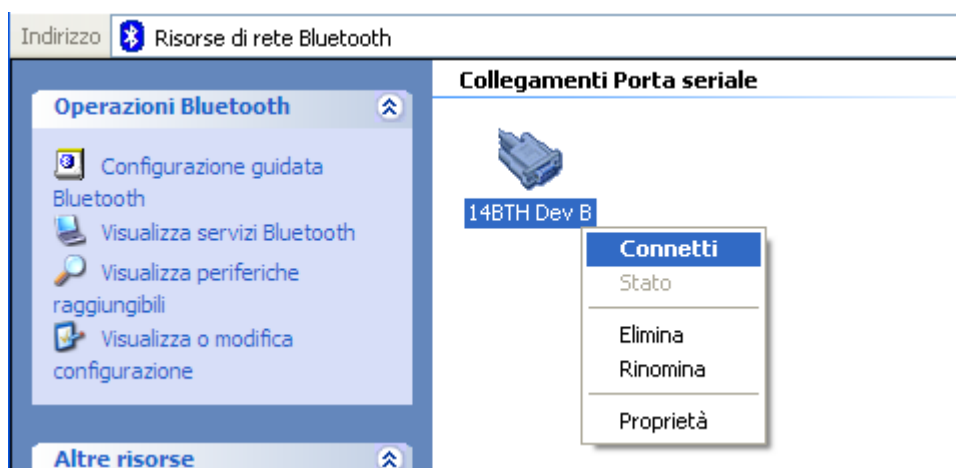
If the Bluetooth module is correctly configured (see section 2.), it will be possible to start a serial communication with the following procedure:

- Open **My Bluetooth** (start → all programs → My Bluetooth).
- The following window will appear:



In this window all configured Bluetooth modules are shown

- With the right mouse key, select the module to be used, and press **Connect**.



Now one can use a serial program for the PC communication.